

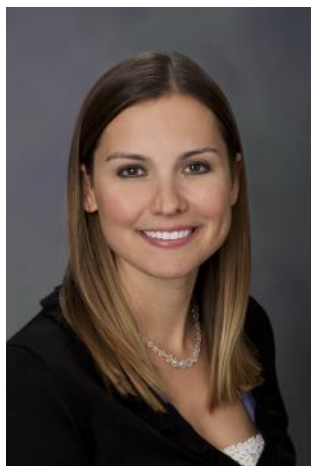
THE Leavenworth CONNECTION



JULY 2014

EDITORS: LISA ALLEN & BETH KELLEY

Welcome Veronica!



Although Veronica Morris has been supporting Leavenworth for the last 4 years, she will now be spending more time in the LV plant. As of July 1st, she will be joining the Leavenworth Team as the Production Scheduling Manager allowing Wayne to focus on shipment of our seasonal giftwrap programs and UK giftwrap transition. Veronica came to Hallmark Cards after receiving her B.S. in Business Administration, and a minor in Communications from the University of Missouri - Kansas City. Veronica began her Hallmark career in Pre-Production Planning in 2008. Veronica helped to develop work flows in Hallmark's legacy systems that supported the future integration points to SAP. In 2010, Hallmark's SAP "Go-Live", Veronica joined the Production Planning team. As a Production Planner, Veronica has had planning responsibilities in support of all LV formats at some point. Veronica resides in Overland Park with her husband and 2 sons. We are excited to have her join our team. Please join me in welcoming her.

PAY SLIP CHANGES

To improve efficiency, Hallmark will discontinue printing and mailing pay slips next month for employees at Liberty, Enfield, LithoKrome, Metamora, Center, Leavenworth, Lawrence and Halls. Beginning **July 25**, employees in these locations will no longer receive a paper pay slip by mail each pay period. Instead, they will be able to view or print pay slips using HR Direct, the company's online system for human resources and payroll activities.

How to access your online pay slip

To access current or past pay slips, sign on to HR Direct, click on HMK Employee Self Service, Standard, then click View Online Pay slip. You may view your pay slip information online and/or print.

To access HR Direct from a non-company PC, use the following link: <http://access.hallmark.com/intranet>

Questions

If you have questions, you may contact your HR Representative or you may contact the HR Service Center at (816) 545-6200 or 1-888-545-6200 Monday through Friday, 7 a.m. – 5:30 p.m. (CST), or by email at HRservicecenter@hallmark.com.

WORLDS OF FUN/OCEANS OF FUN

SINGLE DAY PASS \$ 39.99

CHILDREN UNDER THE AGE OF 3 ARE FREE.

TICKETS CAN BE PURCHASED FROM LISA ALLEN.

PLEASE MAKE CHECKS PAYABLE TO WORLDS OF FUN



CARD SHOP

Happy
4th of
July

How are you celebrating the 4th? Are you having a BBQ or a pool party? Whatever your plans are make your tables BOOM with red, white and blue. Plates, napkins, table covers and banners available now in the card shop for your 4th of July celebration!



BIRTHDAYS

01	Sharon Tinder
02	Robin Dominick
03	Pat Miller
03	Jim Munda
05	Bill Howard
06	Randy Carmack
07	KJ Kalejaiye
08	Greg Boggs
13	Dave Birkes
13	Benji Trammel
14	Tabatha Adams
15	Lisa Allen
18	Sharie Shockey
21	Carl Biastock
21	Michelle Schultz
22	Randy Highfill
22	Stephanie Kreutzer
25	Alfred Gast
25	Danny Mauldin
25	Janice Patterson
28	Dorena McLees

ANNIVERSARIES

20 th	Jim Snider July 25, Roll Wrap
20 th	Donna Barron July 27, Plate Cell
20 th	Rick McMillian July 27, LV Packaging
25 th	Bea Wake July 27,
30 th	Phil Hightower July 16, Gravure
30 th	Russ Pendleton July 19, Maintenance
30 th	Trish Johnson July 20,
30 th	Kyle Smith July 20, Ink Mix
30 th	Bill Howard July 23, Ink Mix
35 th	Kelly Nitzschke July 9, Gravure

2014 CHRISTMAS ORNAMENTS



*Will be available in
the Card Shop*

*Wednesday, July 16,
2014!*

EMPLOYEE PARKING LOT

We will be restriping the parking lot in the near future and making a few changes in the process. There will be increased open parking (about 10 to 12 spaces) with the elimination of a significant number of reserved parking spaces.

We will continue to have reserved/designated parking for visitors, handicap and United Way. With the exception of the United Way designated parking spots, all other reserved/designated parking spots will be located in the first row that is by the sidewalk. Please note that these changes **will not** take place until the restriping of the parking lot is complete. Just think—on those cold winter days (Brrrr...), more of us will be able to park closer to the building!