

THE Leavenworth CONNECTION



DECEMBER 2015

EDITORS: LISA ALLEN & CASSANDRA LINCOLN

Plant Christmas Dinner! Tis The Season To Be Thankful.....



Please join in by sharing a meal with your coworkers. Each shift is scheduled to have a Plant Holiday Dinner & everyone is asked to contribute \$2.00 toward the meat & to bring a side dish of your choice.



Plant Christmas Dinner Schedule:

*Meat to be served: Smoked Pork, Ham,
Turkey Breast & Fried Chicken*

All meals will be served in the Crown Room

2nd Shift

When: Tuesday, December 15, 2014

Time: 7:30 P M

3rd Shift

When: Wednesday, December 16, 2014

Time: 3:30 A M

1st Shift

When: Wednesday, December 16, 2014

Time: 11:30 A M

A Letter from our Plant Manager

Last month I announced my intention to retire from Hallmark on December 31st, 2015. I have been so blessed to have worked at Hallmark for over 35 years. I was given the opportunity to work in several locations over the years. Every place I went I observed the same culture of caring for each other and the product we made. The people I worked with in Topeka, I have always considered family. The last four years I have worked in the Leavenworth Production facility, and if I hadn't started in Topeka, Leavenworth without a doubt would have been my first choice. I have been very lucky to have come into contact with so many wonderful people. I take with me more than I ever gave Hallmark. I have the memories and experiences that are beyond what I had ever dreamed possible. I am reminded of a quote from one of the most profound authors of the 20th Century, "Don't be sad because it is over, be Happy because it happened!" Dr Seuss... I am looking forward to spending more time with my family and exploring new possibilities. Thanks a million for the opportunity to serve.

Tony



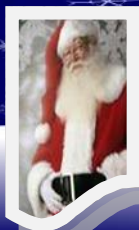
15 Things Your Eyes Say About Your Health

The eyes can be a window into one's health. Glaucoma and cataracts aren't the only problems that can be seen by looking into someone's eyes. Here are 15 red flags to look out for.

1. Disappearing (outer third) of the eyebrows could mean possible thyroid disease.
2. A sty that won't go away after 3 months or recurs in the same location could possibly mean cancer of the sebaceous gland.
3. Bumpy yellowish patches on the eyelid could mean high cholesterol. These are known as "cholesterol bumps" or fat deposits.
4. Burning eyes, blurry vision while using a computer could mean you have computer vision eyestrain.
5. Increasing gunk in the eye could be associated with Blepharitis (inflammation of the eyelids).
6. A small blind spot in your vision, with shimmering lights or a wavy line can mean you are having an optical (eye) migraine.
7. Red, itchy eyes accompanied with sinus issues, runny nose, sneezing or coughing usually means allergies.
8. Whites of the eye turned yellowish is known as Jaundice. Newborns experience this due to immature function of the liver. In adults, it can be a sign of problems of the liver, gallbladder or bile ducts.
9. A new bump or brown spot on the eyelid can occasionally be a type of skin cancer.
10. Eyes that seem to bulge and protrude prominently can be a sign of Hyperthyroidism, the form known as Grave's disease.
11. Sudden or quick onset of double vision, dim vision, or loss of vision can be warning signs of a stroke. Take this very seriously.
12. Dry eyes that are being highly sensitive to light can be a sign of Sjogren's syndrome which is an immune system disorder.
13. Sudden difficulty closing one eye or the inability to control tears in it could mean Bell's Palsy which impairs the nerves that control face muscles. Bell's palsy is temporary and affects half of the face.
14. Blurred vision in a diabetic could mean the beginning of diabetic retinopathy.
15. A light or grey ring (arcus senilis) around the cornea could mean high cholesterol or triglycerides.



Look out for these 15 red flags AND make sure to schedule regular eye exams with your optometrist.



Don't Forget

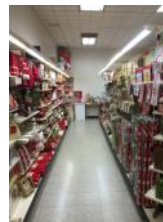
Family Christmas Party

*December 5th
9 AM – 11 AM*

Free pictures with Santa! Balloon artists, face painting and refreshments. Admission is FREE!!!

CARD SHOP

The Card Shop will be open December 5, 9:00 am to 11:00 am during the Family Christmas Party. Be sure to take advantage of the extra opportunity to purchase gift wrap, ribbon, bags or bows to finish wrapping your Christmas gifts. There are mittens, scarves and warm, snuggly throws, pillows, table runners, decorations for your home and holiday serving dishes for your Christmas dinner table. Last but not least don't forget the stocking stuffers...candy, Itty Bitty's, Crayola, or a Hallmark ornament, all of these make great stocking stuffers or gifts!!!



BIRTHDAYS

01	Dan Gallagher
04	Dan Pieratt
04	Dave Schmalstieg
04	Sylvester Traylor
05	Dan Lindstrom
06	Diana Huseby
06	Ray Maxwell
07	Mike Hayes
10	Gus Gustafson
13	Dan Carley
13	Barrett Damron
15	Patty Barnes
16	Brett Kossen
16	Cassandra Lincoln
17	Randy Fields
19	Chris Powers
24	Kim Murphy
27	Larry Meza
28	Gary Britton
28	Phil Hightower
30	Sandy Duffin

Don't forget

Hallmark will again temporarily close headquarters and many outlying facilities between Christmas 2015 and New Year's Day 2016. The temporary closure will include three paid company holidays: Dec. 24, Dec. 25, and Jan. 1 (the company will be open for business Dec. 21 through Dec. 23).

Non-exempt (hourly) employees may choose to use paid time off (PTO) or unpaid voluntary time off (VTO) for the four days of Dec. 28, Dec. 29, Dec.

30, and Dec 31. Exempt (salaried) employees must use PTO for Dec. 28, Dec. 29, Dec. 30, and Dec. 31. Hallmark has also decided to temporarily close headquarters between Christmas 2016 and New Year's Day 2017. More details on that closure will be provided early in 2016.