

THE Leavenworth CONNECTION



APRIL 2013

EDITORS: MEREDITH THOMPSON & LISA ALLEN

Spring Fling Hot Dog Feed



Leavenworth Hallmark Employees are invited to participate in a *Spring Fling Hot Dog Feed* on their respective shift in the Crown Room. There will be a "Build Your Own Dog Bar" and side dish, chips, dessert and drink. No Crown Room Cafeteria services will be available during these times.

2nd When: Tuesday, April 9
Time: 7:30 p.m.

3rd When: Wednesday, April 10
Time: 3:30 a.m.

1st When: Wednesday, April 10
Time: 11:30 p.m.



Welcome these Hallmarkers from Lawrence & Topeka as they settle in to their new departments in Leavenworth

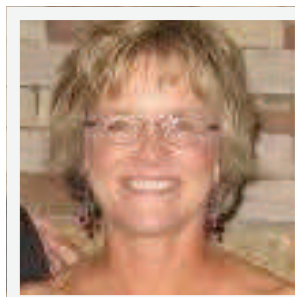
Jacob Hientzelman – 2nd shift – Lawrence – Cascade Operator
KJ – 2nd shift – Lawrence – Sticker Packaging
Denise Garrett – 2nd shift – Lawrence – Reelers
Mindy Truong – 2nd shift – Lawrence – Sticker Packaging

REGISTRATION OPEN FOR Health Screening & Lab Draws

ON APRIL 18

- REGISTRATION HAS BEGUN!
- THE SCREENING WILL BE HELD ON THURSDAY, APRIL 18th
- NO COST TO EMPLOYEES AND INCLUDES LAB TESTS, BLOOD PRESSURE, HEIGHT AND WEIGHT MEASUREMENTS
- YOU WILL EARN 20 HEALTH REWARDS POINTS FOR PARTICIPATING
- TO SIGN UP, YOU CAN EITHER CALL QUEST DIAGNOSTICS AT 1-866-908-9440, OR YOU CAN VISIT my.blueprintforwellness.com and use the registration key "hallmark 2013".
- REGISTRATION ENDS APRIL 3. INSTRUCTIONS ARE ALSO AVAILABLE NEXT TO THE NURSE ROOM DOOR

WELCOME



Konnie Schuman, RN is an Occupational Health Nurse at the downtown Hallmark location. She will fill in at the Leavenworth plant 2 days a week until a permanent

part-time nurse is hired. She is married, lives in Shawnee, has 3 adult children and is an avid Jayhawks fan. She has also been a school nurse. Favorite hobbies are reading and sewing.



Don't forget to log your activities for points on **Healthrewards.hallmark.com**. You can earn up to \$250 for 2013 in either gift certificates or money on your paycheck!

CARD SHOP



Fun, new collections are arriving in the card shop daily. "Beatles," Mickey, "Wizard of Oz" and others. Collections include bags, plaques, picture frames, note pads, coffee mugs and more.



Stop in and see all the new items that have arrived and don't forget to browse around in the quarter price shop. Christmas products and ornaments will not be available after April 19th.

SAFETY spot

SAFETY SHOE TRAILER

Eligible employees will have the opportunity to safety shoe shop on the E. Edwards Safety Shoe Trailer, Tuesday, April 23rd from 6:00 a.m. to 5:30 p.m., as arranged with their manager.

Hallmark will pay \$100 maximum for approved styles. Employees are eligible for new safety shoes under this cost-sharing plan once every twelve months. The employee may choose to purchase one or two pairs of safety shoes with Hallmark paying the \$100 maximum total.

The employee must be prepared to pay the difference if going over the \$100 maximum at the time of purchase to the sales representative on the Safety Shoe Trailer.

Special orders will be delivered back to the plant.

For those employees who are not yet eligible, there will be another safety shoe trailer visit scheduled again toward year-end.

ANNIVERSARIES

5th John Moore
April 7, Process Imp. Eng

35th Alan Collins
April 12, Gravure

35th Susan Loftus
April 17, Gravure

35th Pam Bailey
April 28, Party

Remember you are in a **ZERO LANDFILL ZONE**

BIRTHDAYS

02	Keith Boldridge
02	Steve Bromell
06	Paula Wood
08	Mary Ezell
8	Randy Wilkins
10	Gerard Spills
11	Amanda Scott
14	Gerald Brown
15	Rhonda Cairo
16	Denise DeMaranville
18	Greg Fischer
18	Kay Jones
18	Jerry Kruse
18	Casey Lundberg
18	Curtis Walton
20	Jorge Caraballo
25	Jimmy Blanken
25	Judy Hodges
26	Janet Dooley

HallMark Intranet

Access the intranet from home,

HR Direct, and TMS:

<http://access.hallmark.com/intranet>